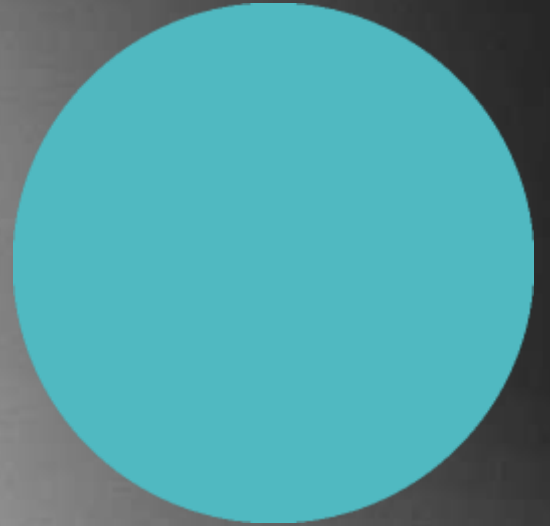


# CS DAV PUBLIC SCHOOL

CLASS- V

CHAPTER -1  
MY BODY

SCIENCE



## DAY WISE DISTRIBUTION OF THE CHAPTER

- DAY 1-INTRODUCTION
- DAY 2-THE BREATHING SYSTEM
- DAY3-THE SKELETAL SYSTEM
- DAY4-THE JOINTS
- DAY5-SENSE ORGANS
- DAY6-SENSE ORGANS IN DIFFERENT ANIMALS

DAY 1

HOW OUR BODY WORKS?

OUR BODY WORKS LIKE A MACHINE WITH THE HELP OF VARIOUS ORGANS?

ORGANS ARE SPECIAL STRUCTURES  
PRESENT IN OUR BODY THAT  
PERFORM SPECIFIC FUNCTIONS



A SYSTEM IS A GROUP OF ORGANS  
THAT WORK TOGETHER FOR A  
PARTICULAR FUNCTION



THE DIGESTIVE SYSTEM

- The mouth, The food pipe, The Stomach and the intestines

WHAT ARE  
ORGANS?

FRIENDS DO YOU KNOW....

# BREATHING SYSTEM



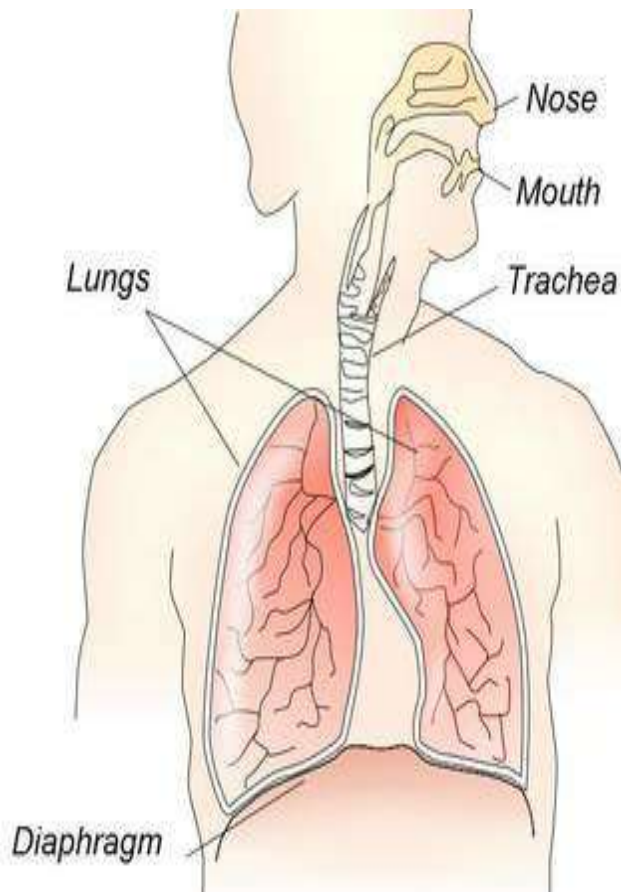
## FRIENDS DO YOU KNOW WHAT IS BREATHING SYSTEM?

All living beings take in oxygen and give out carbon dioxide .This process is called breathing.

### Organs of the breathing system

- Nose-The air that we breathe in , enters our body through the nasal openings of the nose.
- Wind pipe-The nose is connected to two balloon like structures ,inside the body by a tube called wind pipe.
- Lungs-The two balloon like structures are called lungs.

## HUMAN BREATHING SYSTEM



## PROCESS OF BREATHING

- We breathe in oxygen and breathe out carbon dioxide.
- The breathing in and breathing out is done by breathing system.
- We breathe in air through the nose.
- The air enters the throat and into the wind pipe.
- From here it enters the lungs and oxygen from the air is taken by the blood and carbon dioxide is given out .
- This carbon dioxide is then driven out of the body ,through the nose.
- The oxygen rich blood from the lungs is circulated to all parts of the body.
- Blood collects carbon dioxide from all parts of the body and brings it to the lungs.

DO YOU KNOW ?



# ASSIGNMENT

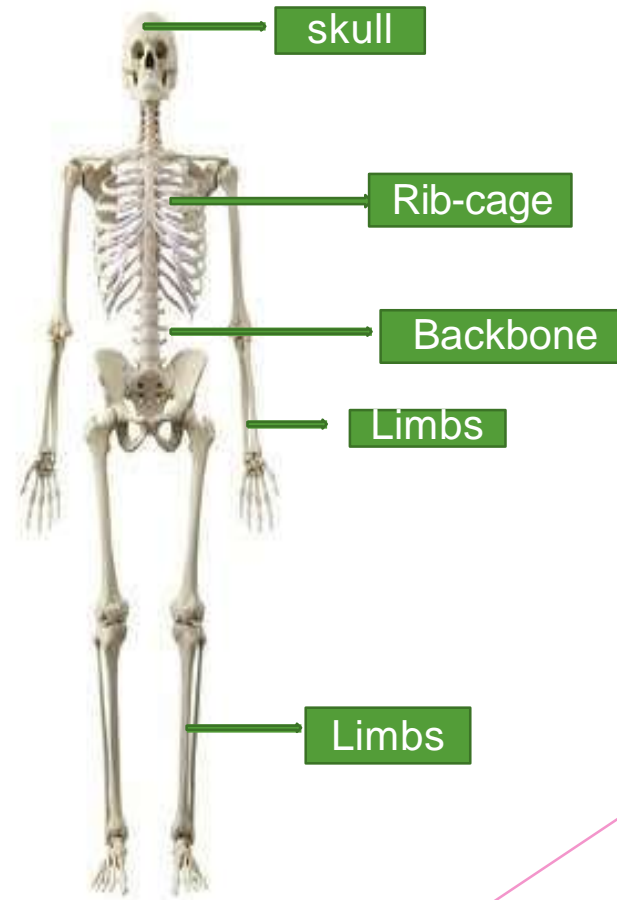
- What is breathing ?
- Do you breathe even when you are sleeping ? Give reason.
- Draw the well labelled diagram of human breathing system

FRIENDS....

DO YOU KNOW WHAT IS  
SKELETAL SYSTEM ?

- Skeletal system makes the framework of the body.
- It gives shape and support to the body.
- It protects the inner delicate organs.
- The skeleton of an adult human being is made up of 206 bones.
- A child is born with more than 300 bones.

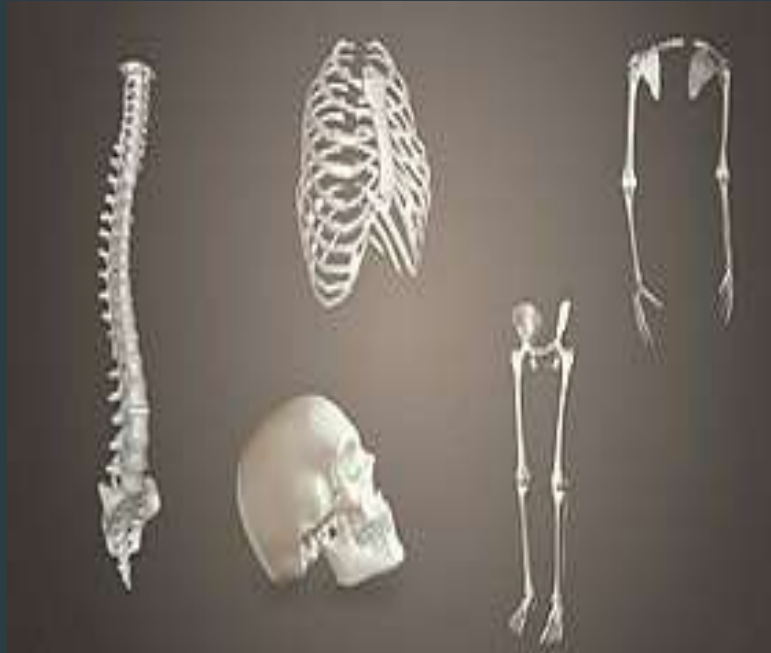
## THE SKELETAL SYSTEM





# BONES

- Bones are hard and strong structures .
- They are made up of calcium, phosphorus and some other minerals.
- Bones are living entities.
- The hollow space of thigh bone and the arm bone is filled with cells and soft materials known as the bone marrow.



# DO YOU KNOW ?

- The Skull
- The Backbone
- The Rib –cage
- The Limbs

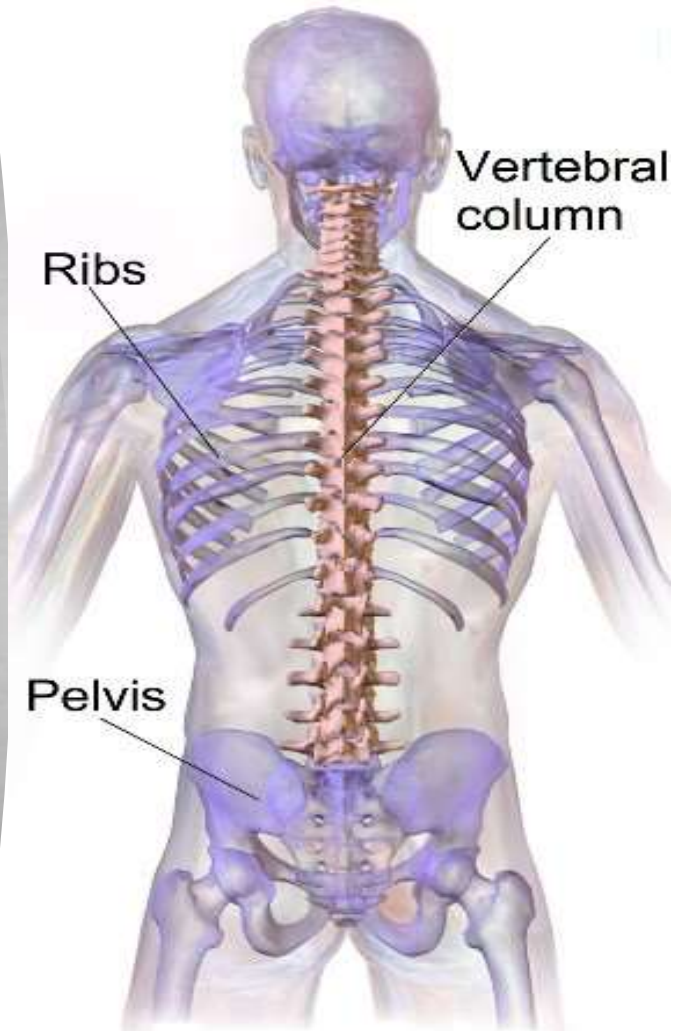
## THE SKULL

- It is made up of eight flat bones.
- They are closely fused together.
- It protects the brain.



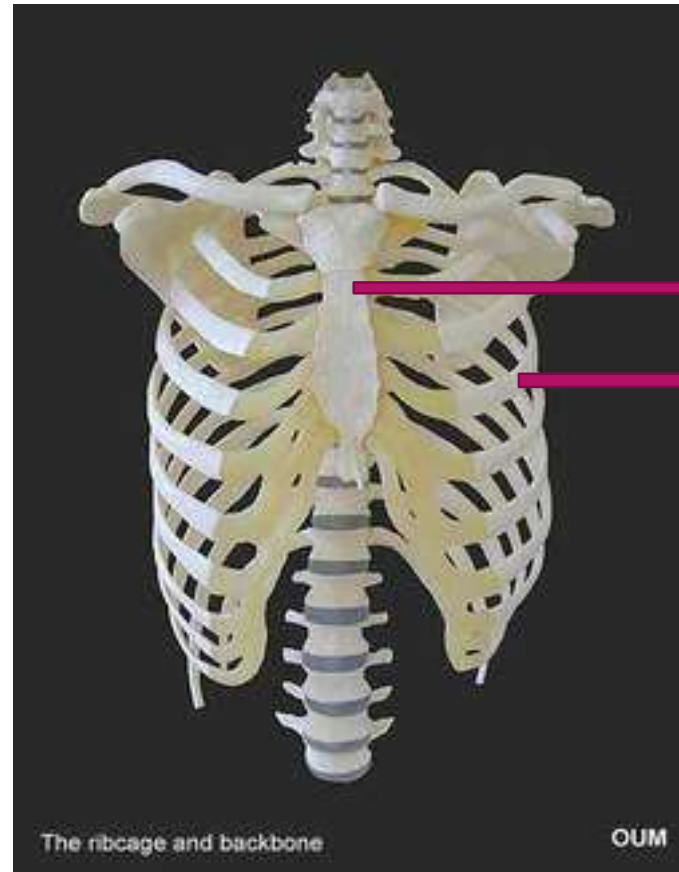
## THE BACKBONE

- The backbone is connected to the skull.
- It is made up of thirty-three small bones called the vertebrae.
- It protects the spinal cord



## THE RIB-CAGE

There are twelve pairs of ribs, forming a cage, around the delicate organs like the heart and the lungs.



Breast bone

Ribs

## THE LIMBS

The fore limbs ,or the arms

, are joined to the spine by

the shoulder girdles and

collar bone.



## ASSIGNMENT

- Why do bones have joints?
- State the importance of Rib-cage in our body?
  - Name the main parts of skeletal system?
- Draw the well labelled diagram of human skeletal system

# THE JOINTS

- The bones are held together to form joints.

## CARTILAGE

The end of each bone is covered by a tough, smooth, shiny substance.

## LIGAMENTS

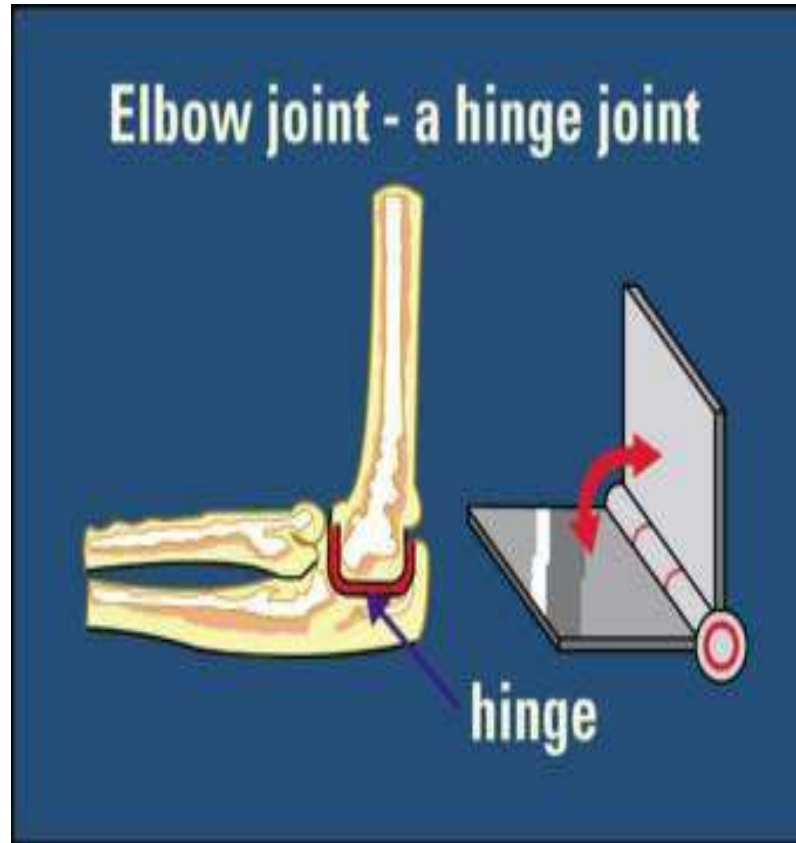
The bones are held together by strong stretchy band-like tissues.

We have over 230 movable and semi-movable joints in our body



## THE HINGE JOINT

- It works like the hinge of a door.
- The bones, connected by this joint move in one plane only.



## THE BALL AND SOCKET JOINT

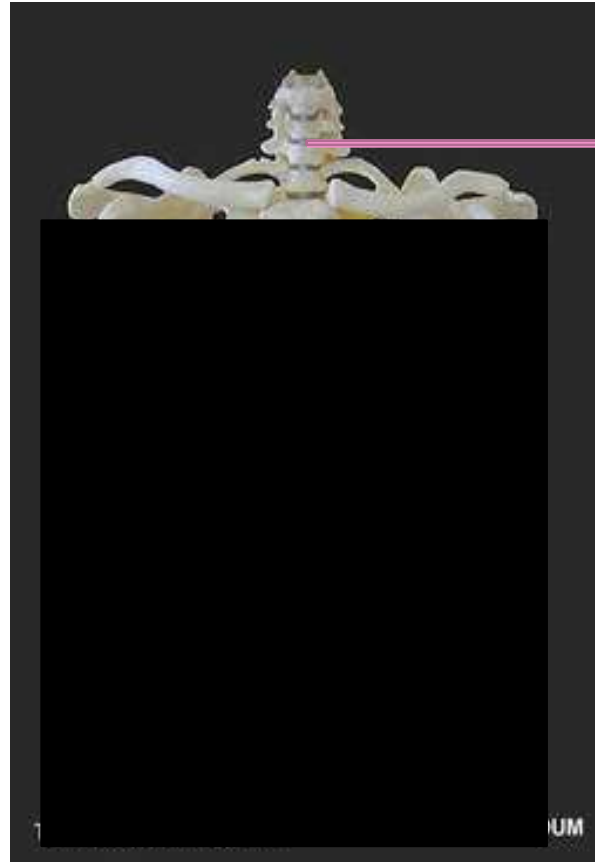
In this joint , one bone which has a ball like end , fits into the hollow socket of another bone.



Ball and socket joint  
on hip girdle

## THE PIVOT JOINT

This type of joint is found between the skull and the first two vertebrae of the spine



Pivot joint

## GLIDING JOINT

This kind of joint is present in wrist, ankle and between any two vertebrae of the spine



Vertebrae showing  
gliding joint

- **Assignment**

- How does the ball and socket joint work?
- How many types of joints are there? Explain it with suitable diagram.

# SENSE ORGANS

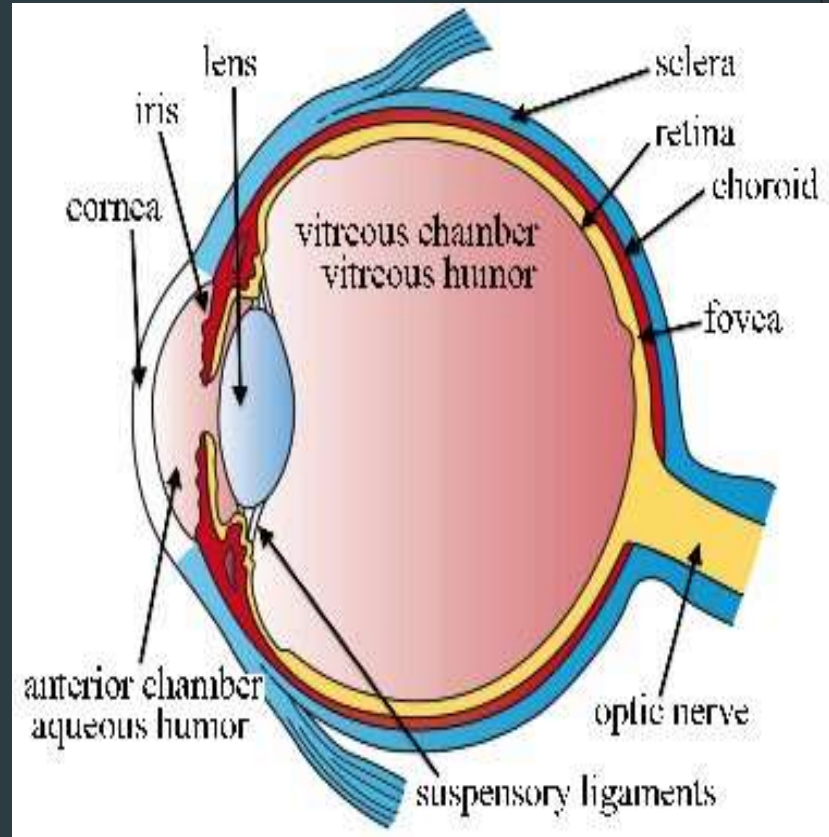
- EYES

Eyeball is placed in a bony socket in the skull.

Iris-The dark structure in front of the eye ball.

Pupil-Rounded opening of the iris through which light pass.

Optic nerve-It connects the eye to the brain.



# SENSE ORGANS

**NOSE**-Nerve endings present in the nose carry message about chemical substance that enters the nose.

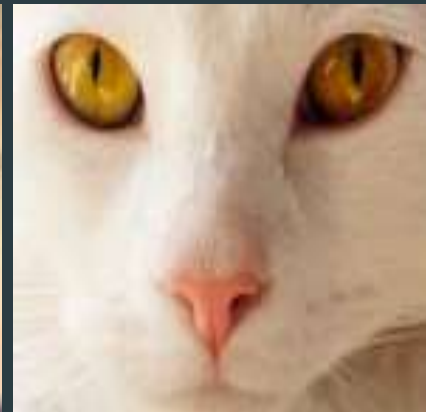
## EARS

1. Outer ear-visible portion of the ear.
2. Middle ear-convey the vibrations to the inner ear.
3. Inner ear –It helps us to hear.

**Tongue**-it has taste buds which are sensitive to four different tastes

-sweet , sour , salty and bitter

**Skin**-It forms a natural protective covering of the entire body.



## SENSE ORGANS IN DIFFERENT ANIMALS

Insects-They have feelers on their bodies.

Water animals-They feel waves through their lateral line.

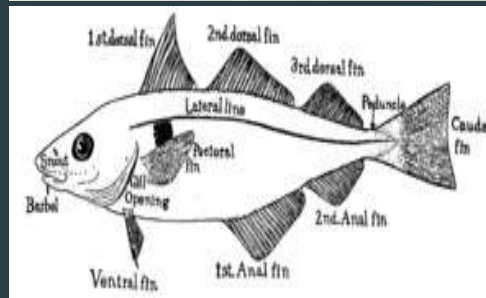
Birds-They have sense organs that is eyes ,ears ,nose ,tongue and skin.

Reptiles-They have tongue and skin as sense organs.

Mammals- eyes ,ears ,nose, tongue and skin



feeler





# ASSIGNMENT

- How does a snake detect the presence of an enemy or a prey ?
- Explain how animals use different sense organs to sense different things, with the help of suitable diagrams.

THANK YOU

